



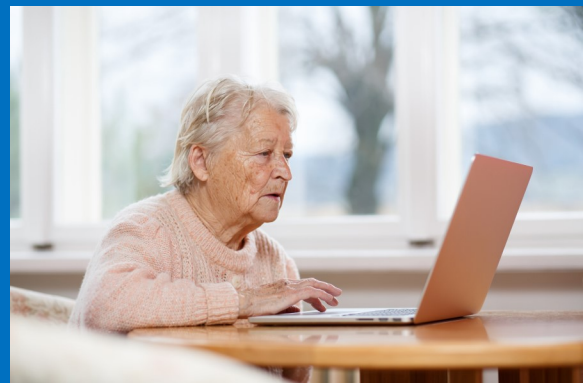
Family Support Group

Weekly Virtual Drop-In Meetings

Thursdays: 7pm-8:30pm

➔ **What do we do?** We are a group of clinical staff and family partners who offer time each week to provide support, guidance, and a safe place to share your stories, connect with others who are having similar experiences, and provide education and information that may be helpful as you navigate the complexities of behavioral health challenges.

[Looking for Your Virtual Appointment? -Click to Join-](#)



For questions/ Accommodations contact:

Michelle: mjohnson@marincounty.org

Linsey: linsey@mentalhealthsf.org